

## Fun Facts about Camp Sababa



Camp Sababa is open to kids  
ages 8-11

You don't have to be a TBT  
Member to attend Camp  
Sababa!

A full morning of Hebrew fun -  
9:00 am until 2:00 pm! For a  
small additional fee, campers  
can stay until 5pm for an  
afternoon program of arts &  
crafts, sports, and fun!

All Hebrew levels welcome!!

Special Shabbat program  
Friday afternoon with Rabbi  
Kinberg

Campers will get to spend time  
with amazing Jewish role  
models!

Campers will build Hebrew  
confidence... and have fun, too!

## Camp Sababa

Temple B'nai Torah  
15727 NE 4th Street  
Bellevue, WA 98008

Phone: 425-603-9677

Fax: 425-603-9699

[www.templebnaitorah.org](http://www.templebnaitorah.org)

## Camp Sababa



Cool Hebrew Fun for  
Cool Kids!

August 16-20  
&  
August 23-27

Temple B'nai Torah  
15727 NE 4th St  
Bellevue, WA 98008

Tel: 425-603-9677

# What is Camp Sababa?

Camp Sababa is Temple B'nai Torah's day camp for children ages 8-11.

Focusing on Hebrew, friendship, and FUN, Camp Sababa is a great way for

kids to brush up on their Hebrew skills and spend time with their Jewish friends!

Campers will learn new Hebrew words, practice reading and writing the Aleph Bet, and engage in fun Hebrew competitions! Every day will begin with an interactive, camp-style Tefillah, and end with an all-camp song session.

For a small additional fee, campers can also attend a fabulous afternoon session (2pm-5pm). Afternoon fun will include arts 'n' crafts, sports, drama, and more!

Camp Sababa Director, Andrea Shmuely, is TBT's Religious School Hebrew Coordinator, and all other camp staff and counselors are active members of the TBT community.

Camp Sababa is all about Hebrew, Friendship, and FUN!

A COOL CAMP FOR COOL KIDS!



## Sample Sababa Daily Schedule

9:00 am - Arrive at Camp! Boker Tov!

9:10 am - Morning Tefillah with song leader Anna Gordon.

Interactive music, movement and prayers to wake us up and make us smile!

9:30 am - Hebrew Warm- Up Games with Andrea Shmuely and Abby Phelps  
Sing the aleph bet while jumping rope, play aleph bet twister, do the aleph bet boogie, and learn some fun modern Hebrew.



10:15 am - Morning Snack  
Eat snack brought from home

10:30 am - Hebrew Stations:  
Practice Reading, Writing and Chanting Hebrew one-on-one with Camp Sababa's amazing counselors.

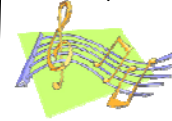
11:30 am - Daily Hebrew Challenge:  
Who will be today's Hebrew Champion?

12:30 pm - Lunch time!  
Eat bag lunches from home and hang out with your friends.



1:15 pm - Shuk Time!  
Use tickets won during the Hebrew challenge to buy prizes and treats from the Camp Sababa shuk (store)

1:30 pm - Song Session  
End the Hebrew portion of the day with an interactive song session led by song leader, Anna Gordon



2:00 pm - Hebrew Only Campers Depart  
Shalom Chaverim!

2:00 pm—After- Care Begins!  
Fun & Games with Ashley Marx and TBT Teens  
Sidewalk Chalk, face painting, arts & crafts, drama, wading pool and more!

3:00 pm - Snack time!  
3:15 pm - More fun & games  
Go to the playground, read and story, play-dough creations, have a dance party, play bingo and more!



5:00 pm - Pick up - see you tomorrow!



Temple B'nai Torah  
15727 NE 4th Street  
Bellevue, WA 98008

Phone: 425-603-9677  
Fax: 425-603-9699  
[www.templebnaitorah.org](http://www.templebnaitorah.org)